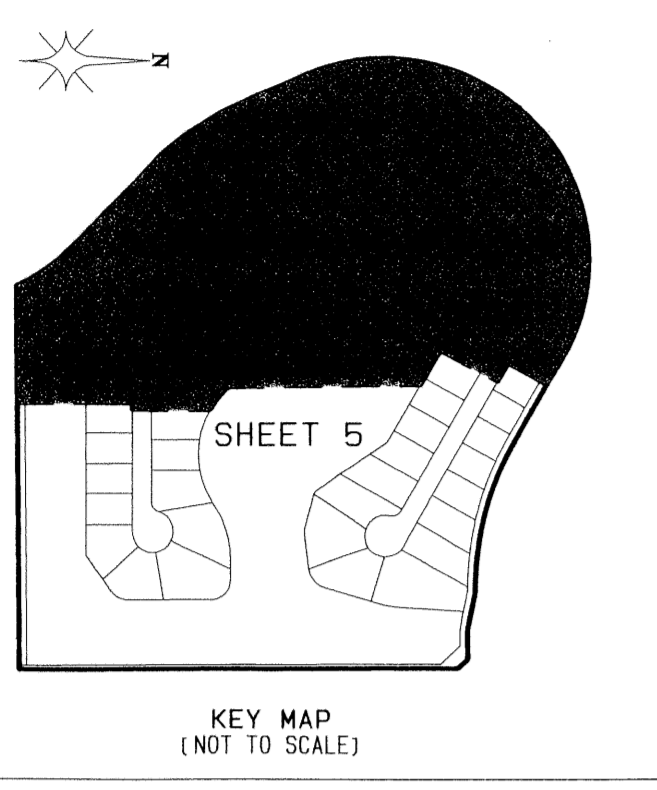


ENCLAVE AT BOYNTON WATERS

AT LAKES OF BOYNTON BEACH P.U.D., POD B
 SITUATE IN SECTION 22, TOWNSHIP 45 SOUTH, RANGE 42 EAST, PALM BEACH COUNTY,
 FLORIDA, BEING A REPLAT OF A PORTION OF BLOCK 48, "THE PALM BEACH FARMS COMPANY
 PLAT NO. 3" AS RECORDED IN PLAT BOOK 2, PAGES 45 THROUGH 54,
 OF THE PUBLIC RECORDS OF PALM BEACH COUNTY, FLORIDA
 SHEET 4 OF 5
 AUGUST, 2000



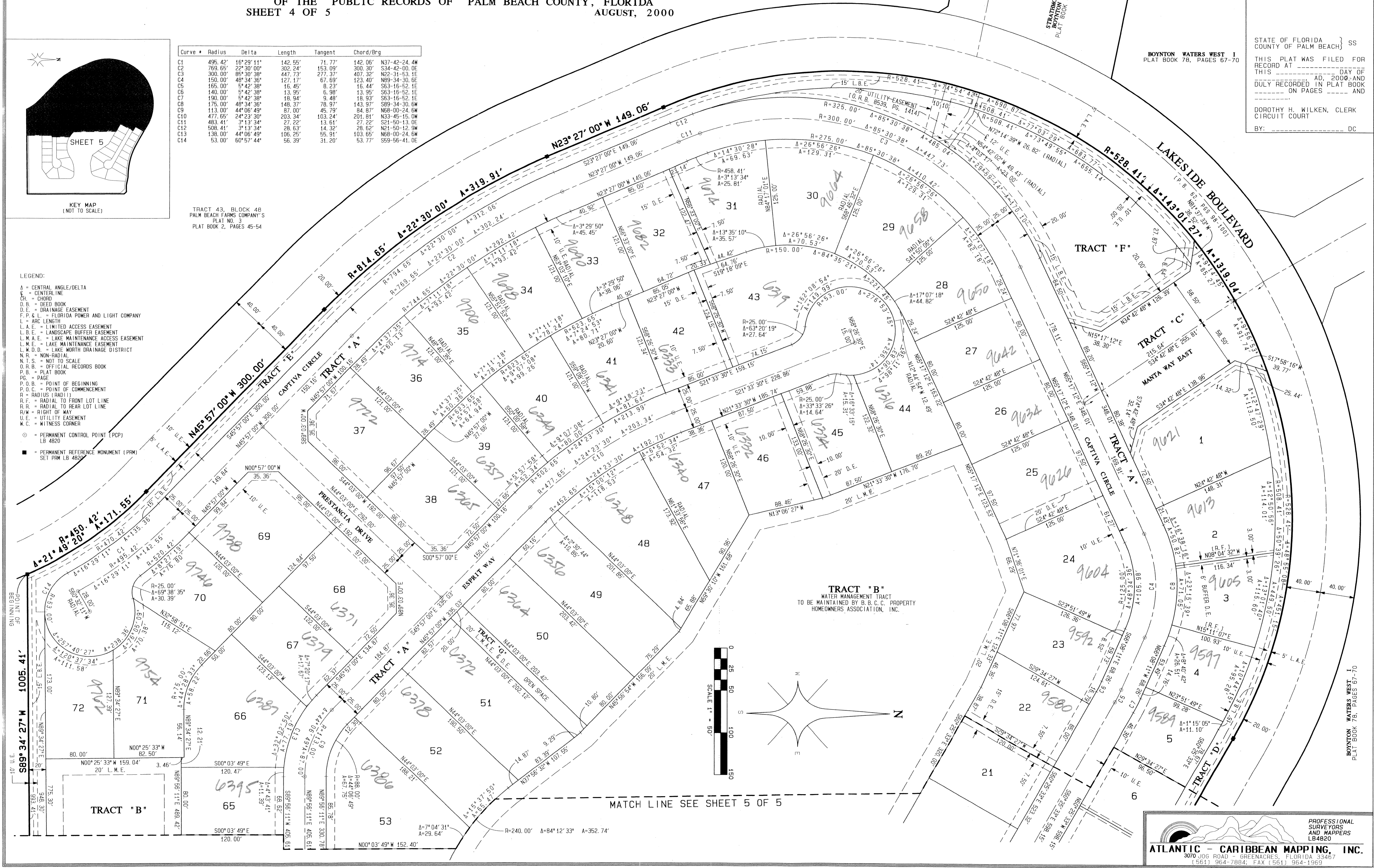
Curve	Radius	Delta	Length	Tangent	Chord/Brg
C1	495.42'	16°29'11"	142.55'	71.77'	142.06' N37°42'24.4W
C2	769.65'	22°30'00"	302.24'	153.09'	300.30' S34°42'00.0E
C3	300.00'	85°30'38"	447.73'	277.37'	407.32' N22°31'53.1E
C4	150.00'	48°34'36"	127.17'	67.69'	123.40' N69°34'30.6E
C5	165.00'	5°42'38"	16.45'	8.23'	16.44' S63°16'52.1E
C6	140.00'	5°42'38"	13.95'	6.98'	13.95' S63°16'52.1E
C7	190.00'	5°42'38"	18.34'	9.48'	18.33' S63°16'52.1E
C8	175.00'	48°34'36"	148.37'	78.97'	143.97' S89°34'30.6W
C9	113.00'	44°06'49"	87.00'	45.79'	84.87' N68°00'24.6W
C10	477.65'	24°23'30"	203.34'	103.24'	201.81' N33°45'15.0W
C11	483.41'	2°13'34"	27.22'	13.61'	27.22' S21°50'13.0E
C12	508.41'	3°13'34"	28.63'	14.32'	28.62' N21°50'12.9W
C13	138.00'	44°06'49"	106.25'	55.91'	103.65' N68°00'24.6W
C14	53.00'	60°57'44"	56.39'	31.20'	53.77' S69°56'41.0E

- LEGEND:
- A = CENTRAL ANGLE/Delta
 - C.L. = CENTERLINE
 - Ch. = CHORD
 - D.B. = DEED BOOK
 - D.E. = DRAINAGE EASEMENT
 - F.P. & L. = FLORIDA POWER AND LIGHT COMPANY
 - L.A.E. = LIMITED ACCESS EASEMENT
 - L.B.E. = LANDSCAPE BUFFER EASEMENT
 - L.M.A.E. = LAKE MAINTENANCE ACCESS EASEMENT
 - L.M.E. = LAKE MAINTENANCE EASEMENT
 - L.W.D. = LAKE WORTH DRAINAGE DISTRICT
 - N.R. = NON-RADIAL
 - N.T.S. = NOT TO SCALE
 - O.R.B. = OFFICIAL RECORDS BOOK
 - P.B. = PLAT BOOK
 - P.C. = POINT OF COMMENCEMENT
 - P.O.B. = POINT OF BEGINNING
 - P.O.C. = POINT OF COMMENCEMENT
 - R = RADIUS (RADII)
 - R.F. = RADIAL TO FRONT LOT LINE
 - R.R. = RADIAL TO REAR LOT LINE
 - R.W. = RIGHT OF WAY
 - U.E. = UTILITY EASEMENT
 - W.C. = WITNESS CORNER
 - = PERMANENT CONTROL POINT (PCP)
LB 4820
 - = PERMANENT REFERENCE MONUMENT (PRM)
SET FROM LB 4820

TRACT 43, BLOCK 48
 PALM BEACH FARMS COMPANY'S
 PLAT NO. 3
 PLAT BOOK 2, PAGES 45-54

STATE OF FLORIDA } SS
 COUNTY OF PALM BEACH }
 THIS PLAT WAS FILED FOR
 RECORD AT _____ DAY OF
 _____ AD, 2000, AND
 DULY RECORDED IN PLAT BOOK
 _____ ON PAGES _____ AND

 DOROTHY H. WILKEN, CLERK
 CIRCUIT COURT
 BY: _____ DC



STATION ENCLAVE AT BOYNTON WATERS
 BOOK 99 PAGE 108
 FLOOD MAP # 185A
 QUAD # 95 ZONING RS
 SE 875-1518 ZIP CODE 33491
 TAZ 443
 PUD NAME LAKES OF BOYNTON BEACH Pod B

PROFESSIONAL
 SURVEYORS
 AND MAPPERS
 LB4820
ATLANTIC - CARIBBEAN MAPPING, INC.
 3070 J06 ROAD - GREENACRES, FLORIDA 33467
 (561) 964-7884; FAX (561) 964-1969